



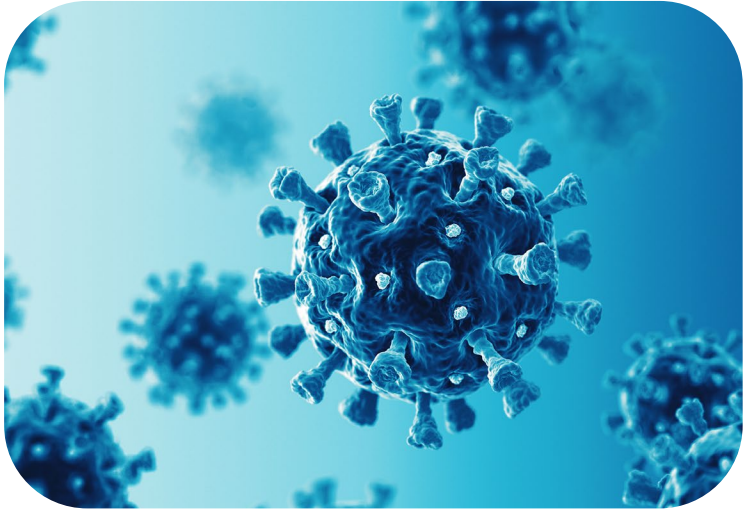
WHAT DO WE MEAN WHEN WE SAY, “HEALTH DISPARITIES?”

A PRESENTATION TO
THE RESEARCH CENTERS COLLABORATIVE NETWORK OF THE NIA

Shannon N. Zenk, PhD, MPH, RN
Director, NINR

A high-angle, top-down photograph of a diverse group of people standing in a circle on a wooden floor. They are all reaching their hands towards the center, where they are stacked on top of each other. The people are wearing various casual and business-casual clothing, including denim jackets, patterned shirts, and blouses. The lighting is soft and even, highlighting the texture of the wood and the variety of colors in their clothing. The overall mood is one of collaboration and shared purpose.

We need solutions now



2x

People who are **Hispanic, Black, and American Indian or Alaska Native** are **nearly twice as likely to die from COVID-19** as people who are White.



1 in 5

1 in 5 adults in the United States report **experience with discrimination** in the health care system.

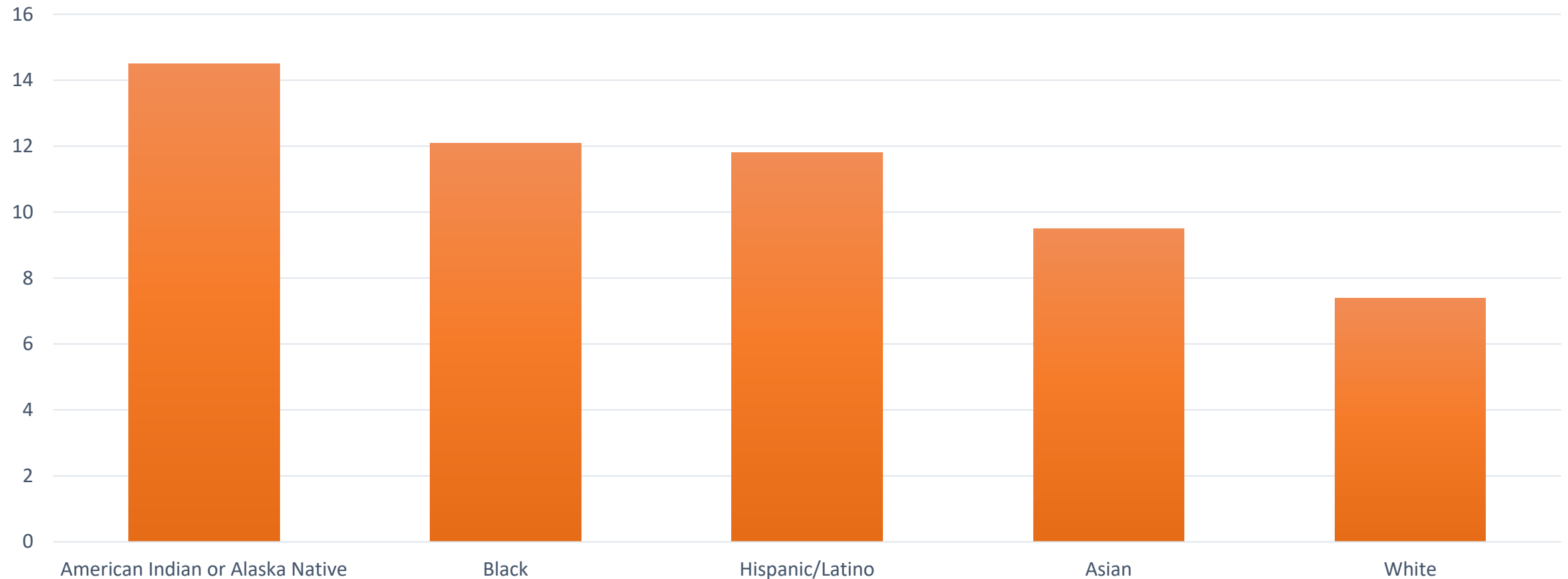


75%

About **75% of Americans aged 65+** have **multiple chronic conditions**, with **non-Hispanic Black people more likely** than Whites to experience multimorbidity.

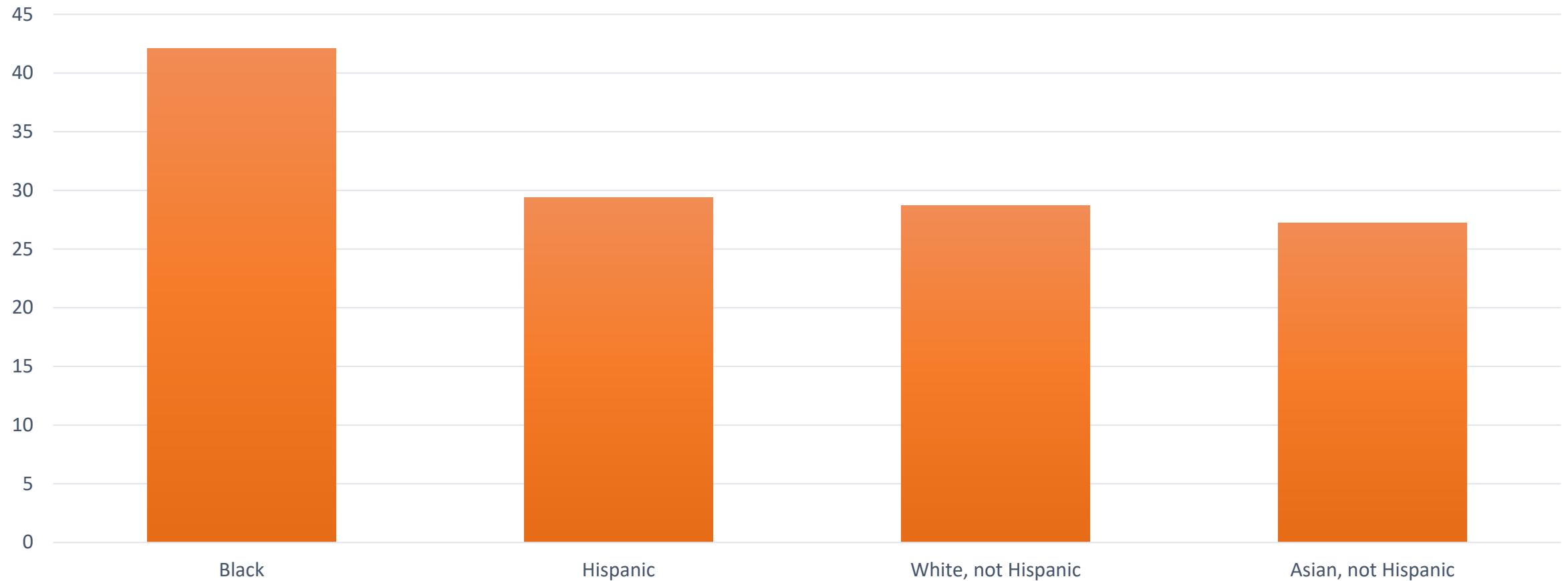


Percentage of U.S. Adults 18 or Older With Diagnosed Diabetes, by Race and Ethnicity, 2018–2019



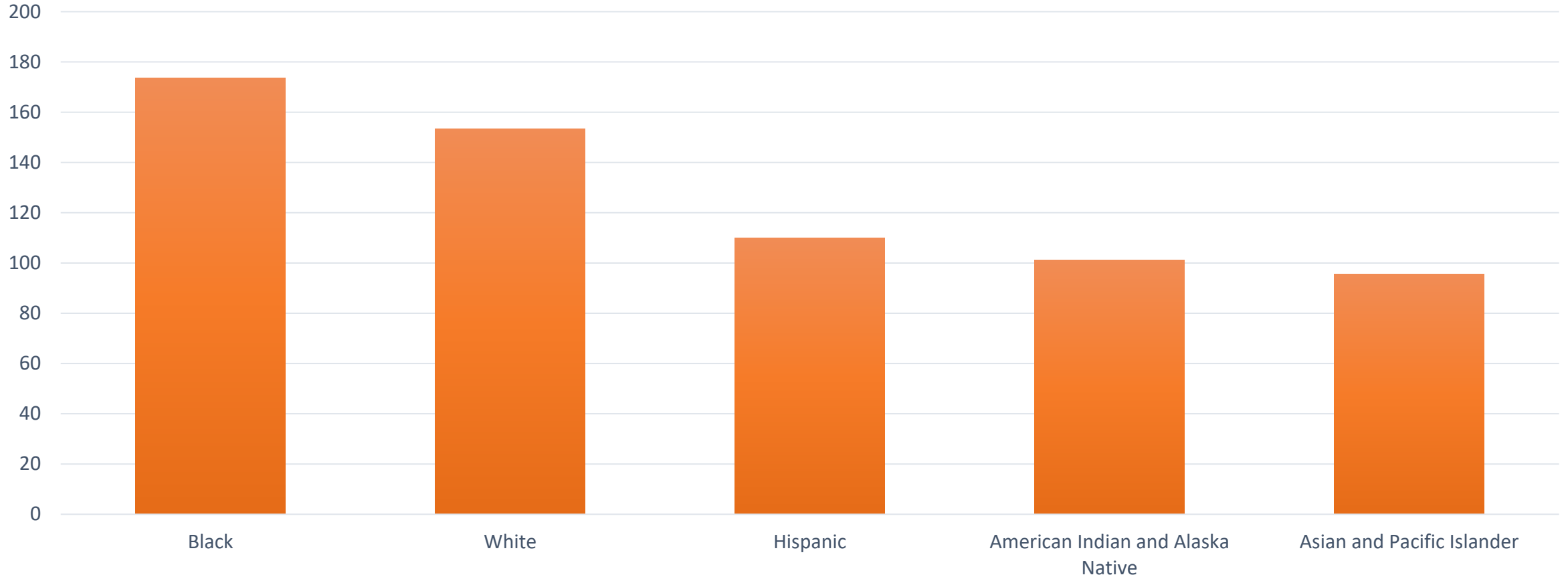


Percentage of U.S. Adults 20 or Older With Diagnosed Hypertension, by Race and Ethnicity, 2015-2016





Cancer Deaths per 100,000 by Race and Ethnicity, 2015-2019





Health Disparities

Health Inequities

Health Disparity

A health difference that adversely affects a disadvantaged populations, based on one or more of the following:

- Disease incidence, prevalence, or onset
- Prevalence of risk factors, unhealthy behaviors, or clinical measures in the causal pathway of a disease outcome
- Rates of symptoms, global daily functioning, or QOL
- Mortality from diseases where population rates differ
- Global burden of disease using a standardized metric

NIH-Designated Health Disparity Populations

- Racial or ethnic minority populations (*American Indians or Alaska Natives; Asian Americans; Blacks/African Americans; Native Hawaiians or other Pacific Islanders; Hispanics/Latinos*)
- Sexual and gender minority populations
- Socioeconomically disadvantaged populations
- Underserved rural populations

Health Inequity - Health Equity

Health Inequity (Whitehead; WHO)

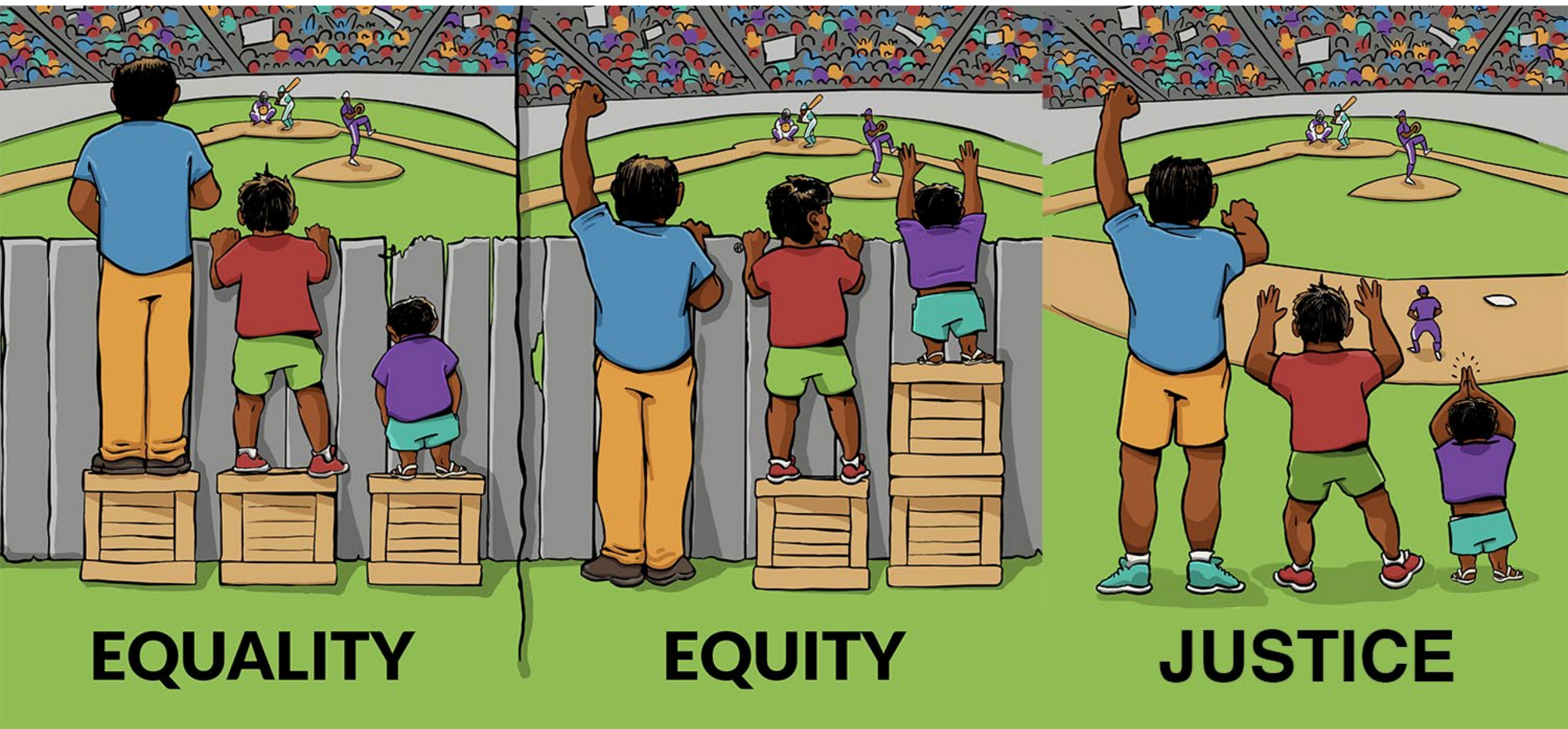
Unfair, unjust, avoidable, or unnecessary differences in health outcomes

Health Equity (CDC)

Every person has the opportunity to attain their full health potential, with no one disadvantaged because of their social position or other socially determined circumstances.

Health Equity (RWJF)

Everyone has a fair and just opportunity to be as healthy as possible. Achieving this requires removing obstacles to health—such as poverty and discrimination and their consequences, which include powerlessness and lack of access to good jobs with fair pay; quality education, housing, and health care; and safe environments.



EQUALITY

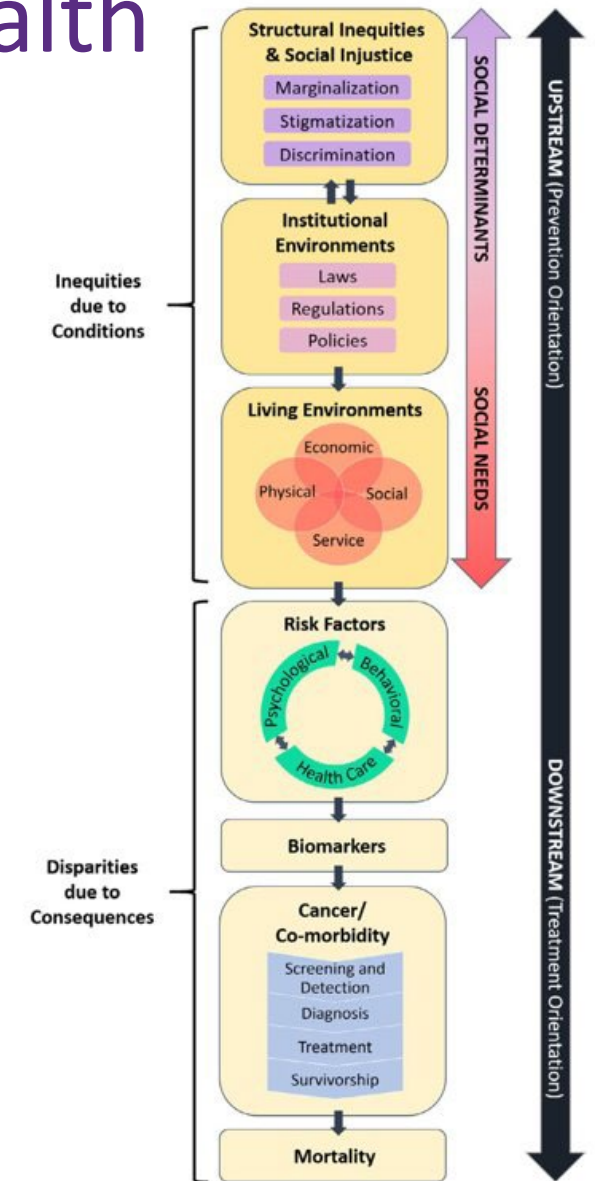
EQUITY

JUSTICE

(From Boston Medical Center. Adaption of work by Interaction Institute for Social Change. Artist: Angus Maguire)

Social and Structural Determinants of Health

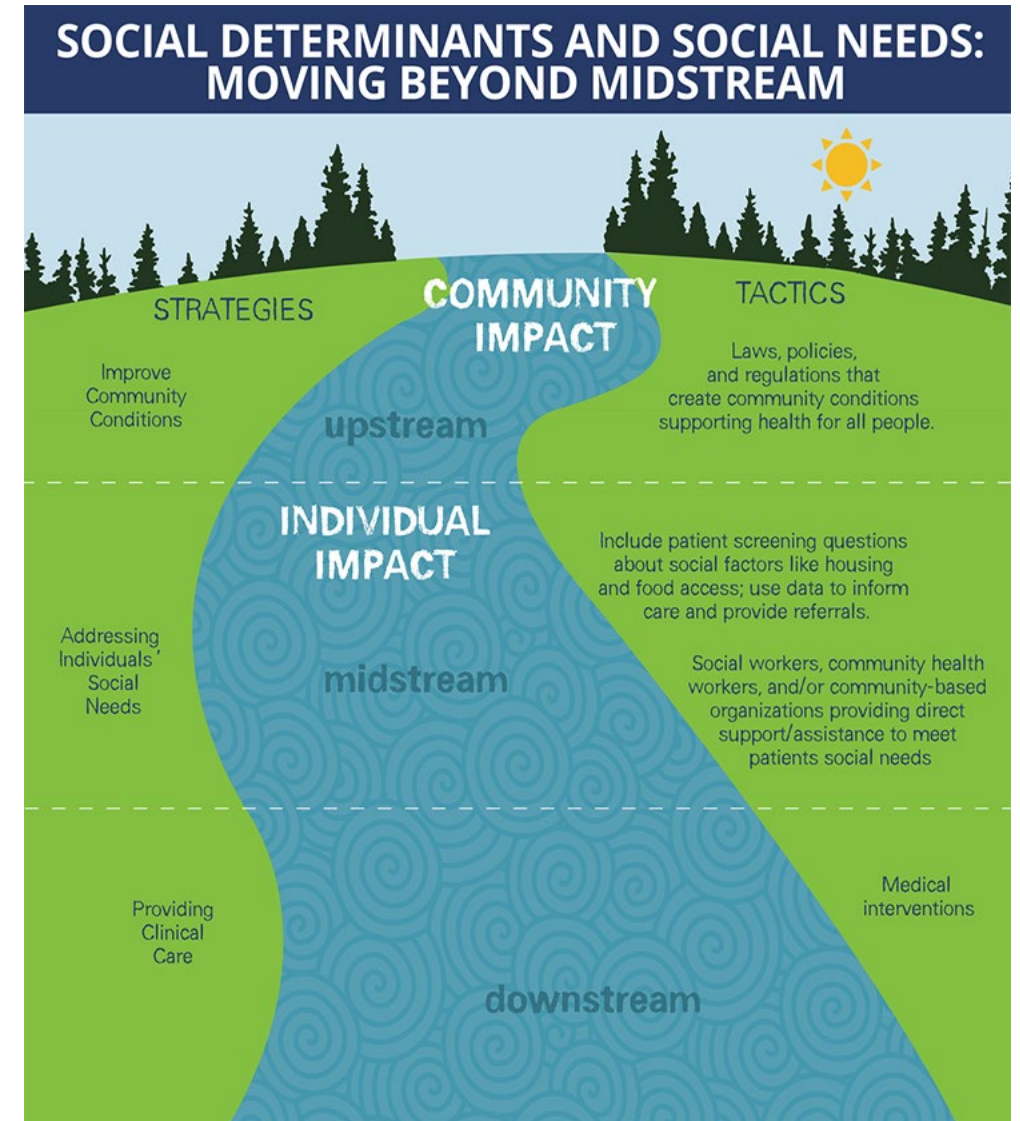
- **Social determinants:** Conditions in which people are born, grow, live, work and age.
- **Structural determinants:** Economic, legal, political, and cultural systems and forces that shape distribution of power and resources across society and people's position within it



Alcares 2020

Social Needs

- Individual- or family-level adverse social determinant of health, such as low-education level, food insecurity, or housing instability



From: Meeting Individual Social Needs Falls Short Of Addressing Social Determinants Of Health (Castrucci & Auerbach)

Meanings and Misunderstandings: A Social Determinants of Health Lexicon for Health Care Systems (Alderwick & Gottlieb)



National Institute of Nursing Research





NATIONAL INSTITUTE OF NURSING RESEARCH



2022-2026 STRATEGIC PLAN

Research Lenses – Examining Health Challenges



Health Equity



**Social Determinants
of Health**



**Population and
Community Health**



**Prevention and Health
Promotion**



**Systems and Models
of Care**

Health Equity

Reduce and eliminate the systemic and structural inequities that place some at an unfair, unjust, and avoidable disadvantage in attaining their full health potential.



Social Determinants of Health

Identify effective approaches to improve health and quality of life by addressing the conditions in which people are born, live, learn, work, play, and age.



ABOUT NINR

Who We Are

What We Do

Strategic Plan

Connect With Us

Visitor Information

Jobs at NINR

The National Institute of Nursing Research 2022–2026 Strategic Plan

PRINT SHARE

Introduction

Director's Overview

Scientific Strategy

Stewardship

Development Process

FAQs

The National Institute of Nursing Research 2022–2026 Strategic Plan outlines the Institute’s vision for supporting science that advances our mission: to lead nursing research to solve pressing health challenges and inform practice and policy—optimizing health and advancing health equity into the future.

Nurses are crucial to solving the Nation’s most pressing and persistent health challenges. As both the largest health profession and the largest of all professions in the Nation, nurses are the backbone of our health systems in the United States and have ranked as the most trusted profession for 20 years in a row. Nurses interact with individuals and families more closely than other health professionals in the many clinical, community, and policy settings in which they work; thus, they have a deep understanding of the personal and societal factors that lead to health among some, and illness among others. NINR believes that nursing research is the key to unlocking the power and potential of nursing by leveraging these strengths and unique knowledge and perspectives inherent to the discipline to the benefit of all people.



NINR.NIH.gov

NEW NIH-WIDE COLLABORATIONS



Community Partnerships to Advance Science for Society (ComPASS)



Co-Chairs: NIMH, NIMHD, NINR, ORWH, THRO
dpcpsi.nih.gov

NIH-Wide Social Determinants of Health Research Coordinating Committee



Facilitate

Facilitate sharing of information about SDOH research across NIH and with Federal partners



Develop

Develop SDOH expertise, capacity, and a learning system at NIH



Build

Build community and collaborations in SDOH research across NIH and with Federal partners



Identify

Identify gaps and promising SDOH research directions

Accelerate SDOH research across NIH

across diseases and conditions, populations, life course, SDOH domains

Executive Committee: FIC, NCATS, NCCIH, NCI, NHGRI, NIA, NIAMS, NICHD, NIDDK, NIEHS, NIMHD,* NINR,* NLM, OAR, OBSSR,* ODP, ORWH, SGMRO

*Co-Chairs



Save the Date: Director's Lecture

Dr. Vincent Guilamo-Ramos

Dean and Professor, School of Nursing
Vice Chancellor for Nursing Affairs
Duke University

Dr. Brian C. Castrucci

President and CEO
De Beaumont Foundation

Date: July 12, 2022

Time: 10:00 AM (ET)



National Institute of Nursing Research

NINR.NIH.gov

Email us: info@ninr.nih.gov

Twitter: [@NINR](https://twitter.com/NINR)

LinkedIn: [National Institute of Nursing Research](https://www.linkedin.com/company/ninr)