

# Life course perspectives on aging: an animal model perspective

Jenny Tung

*RCCN workshop: Life Course Perspectives on Aging  
November 3, 2020*



@jtung5

@AmboseliBaboons







**Noah Snyder-Mackler**  
Arizona State University,  
School of Evolution and Social  
Change



**Robbie Burger**  
University of Arizona  
Ecology & Evolutionary Biology



**Lauren Gaydosh**  
Vanderbilt University  
Medicine, Health, and Society



**Dan Belsky**  
Columbia University  
Epidemiology



**Grace Noppert**  
UNC-Chapel Hill  
Carolina Population Center



**Fernando Campos**  
UT-San Antonio  
Anthropology



**Alessandro Bartolomucci**  
University of Minnesota  
Integrative Biology & Physiology



**Yang Claire Yang**  
UNC-Chapel Hill  
Sociology/CPC



**Kathie Mullan Harris**  
UNC-Chapel Hill  
Sociology/CPC



**Angie O'Rand**  
Duke University  
Sociology/DUPRI



**Carol Shively**  
Wake Forest University  
Pathology and Comparative  
Medicine



**Susan Alberts**  
Duke University  
Biology/Evolutionary Anthropology



**Allison Aiello**  
UNC-Chapel Hill  
Epidemiology





Beth Archie



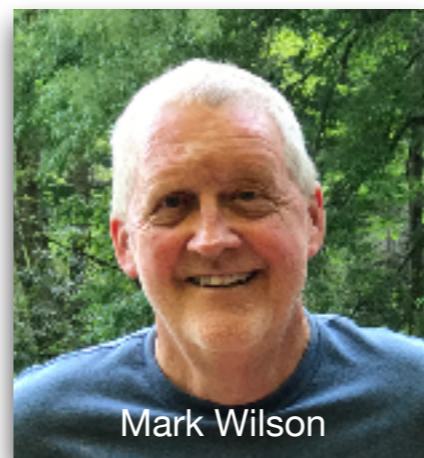
Alyssa Arre



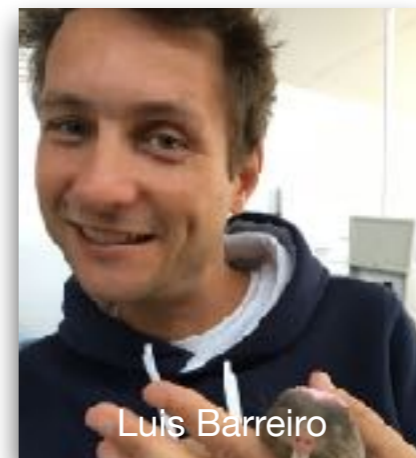
Susan Alberts

Beth Archie

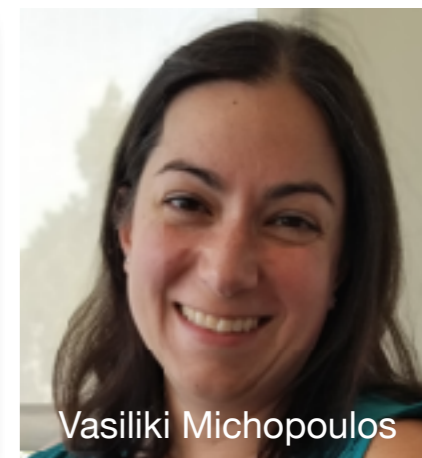
Jeanne Altmann



Mark Wilson



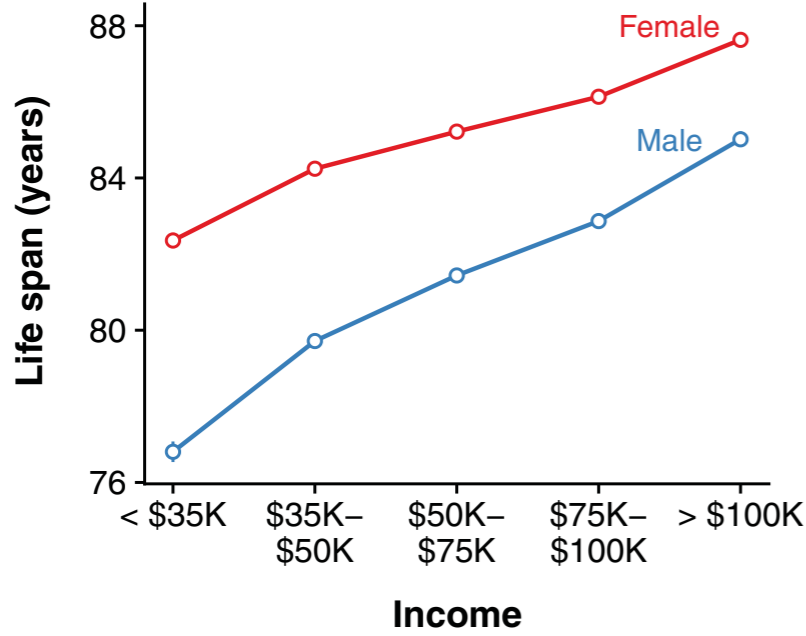
Luis Barreiro



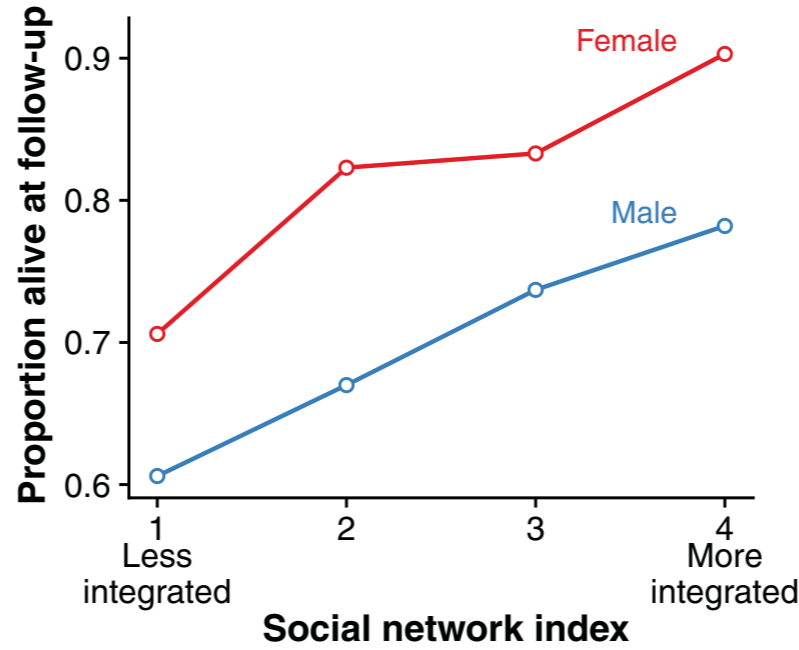
Vasiliki Michopoulos



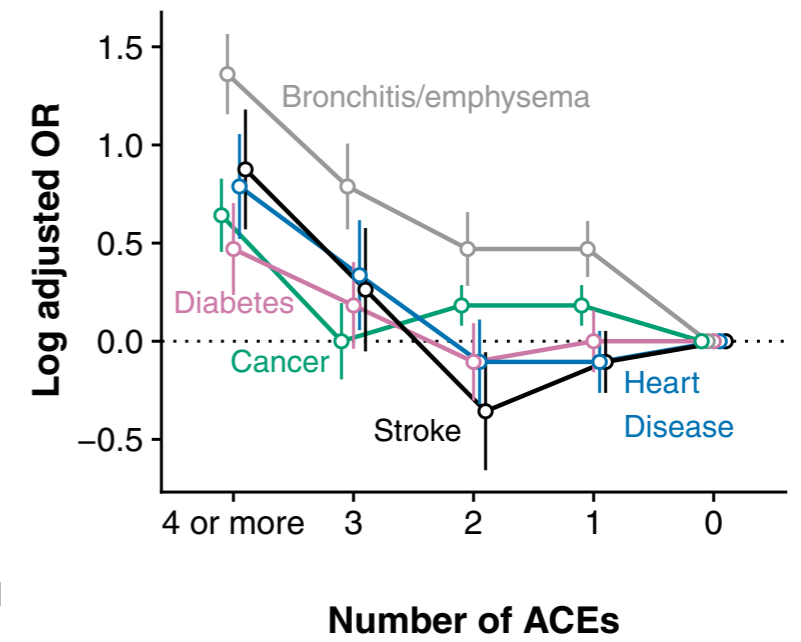
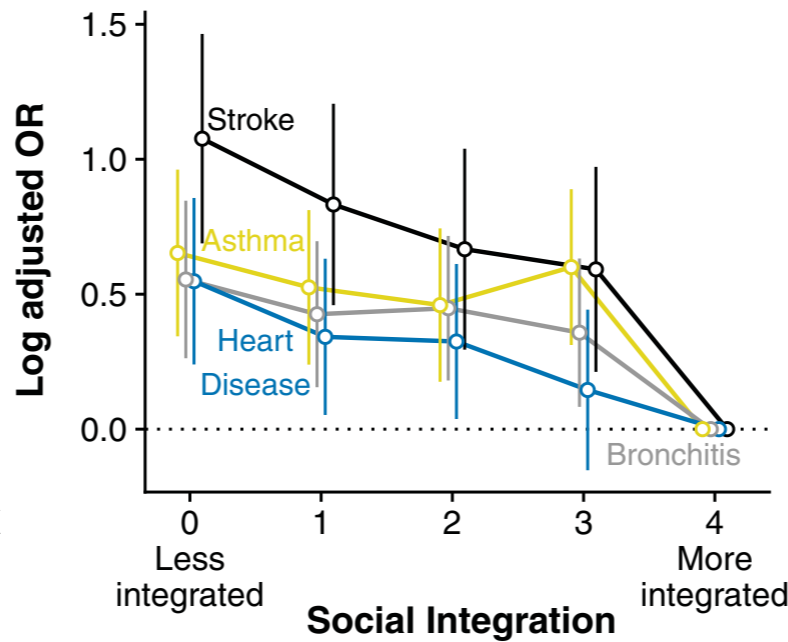
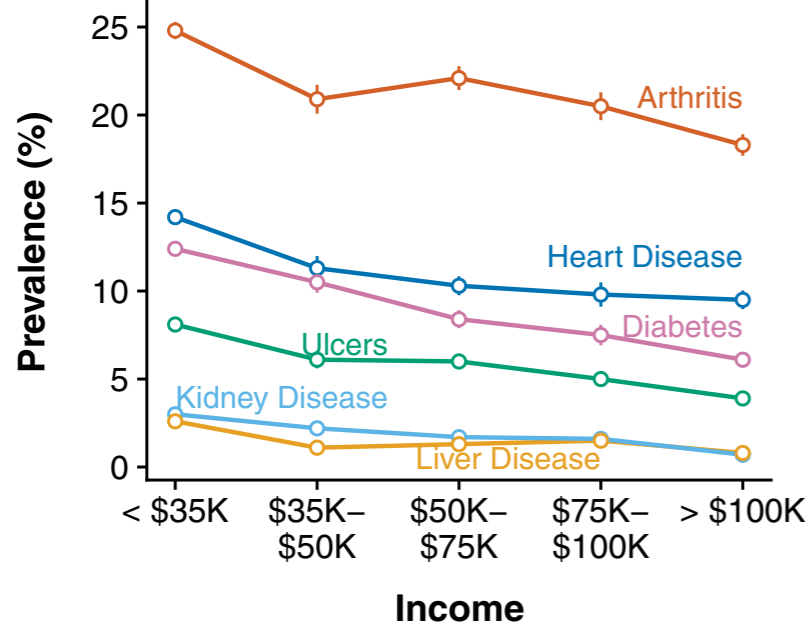
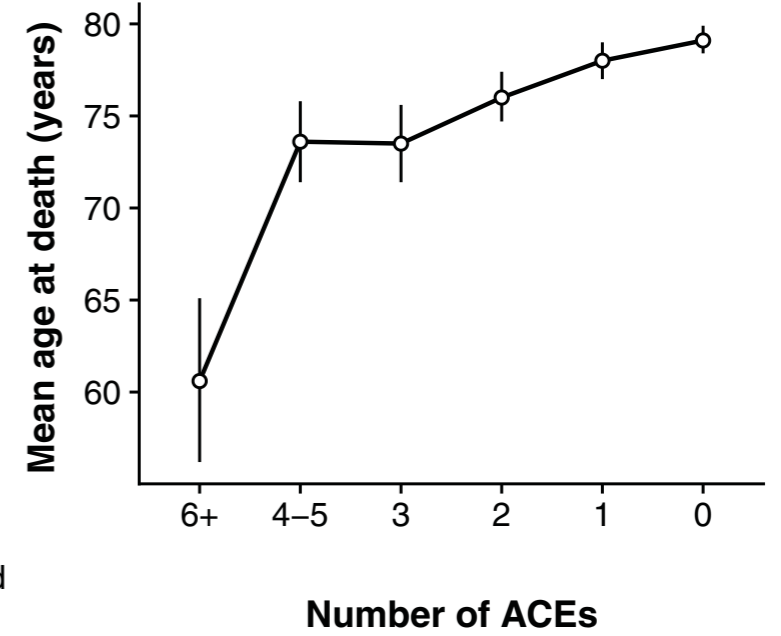
**socioeconomic status**



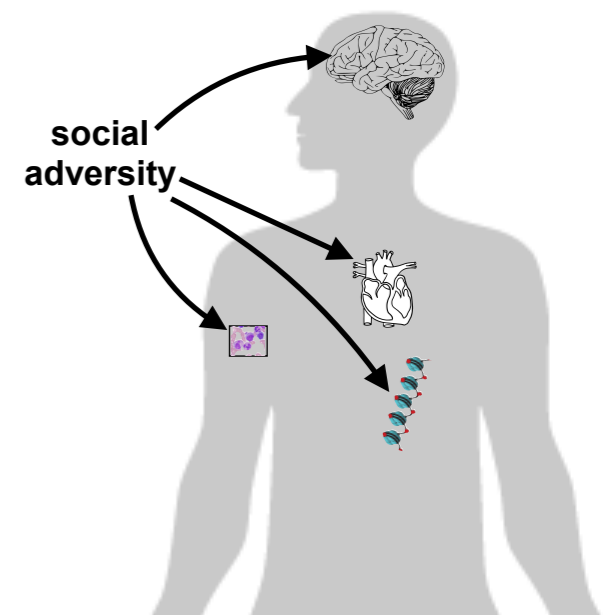
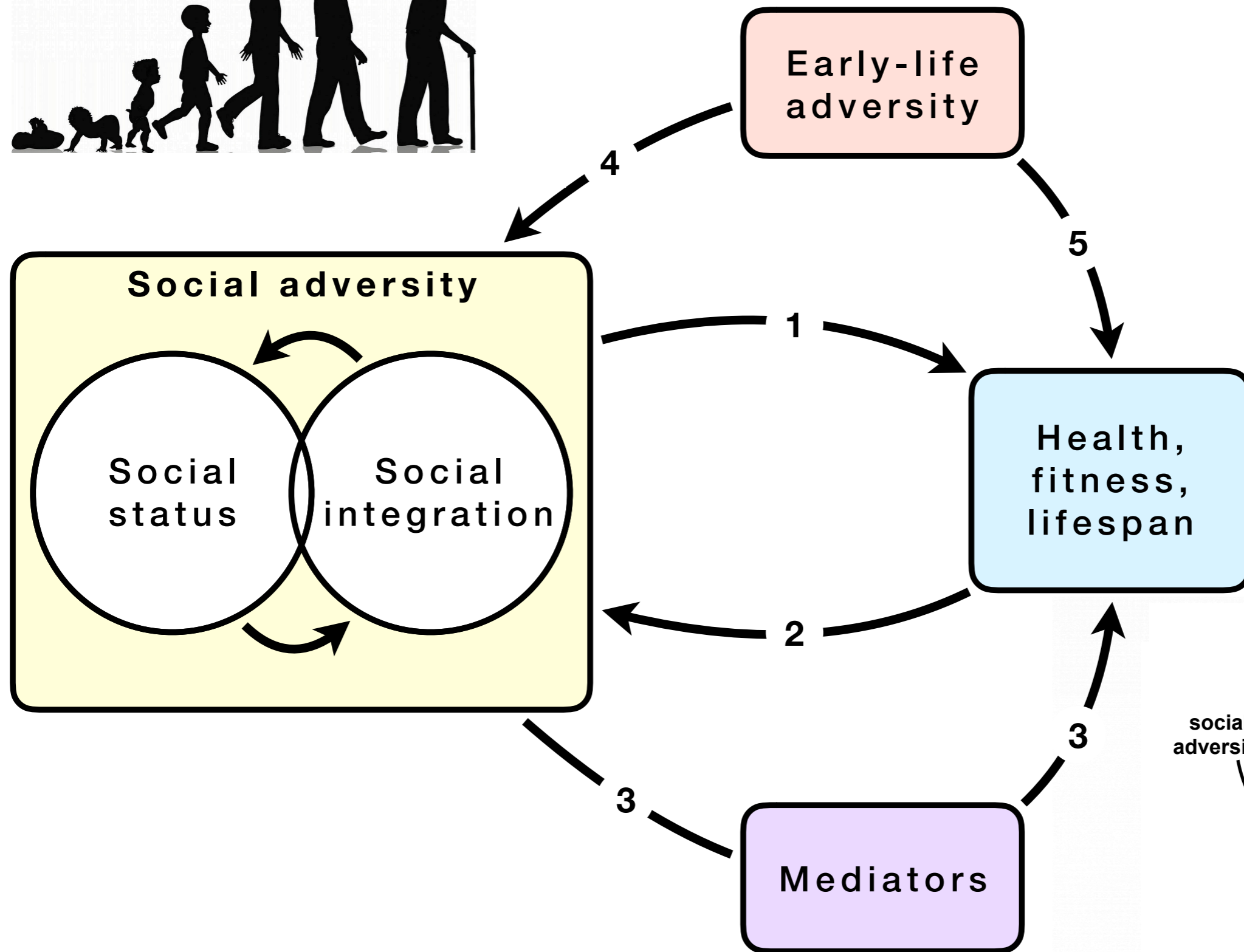
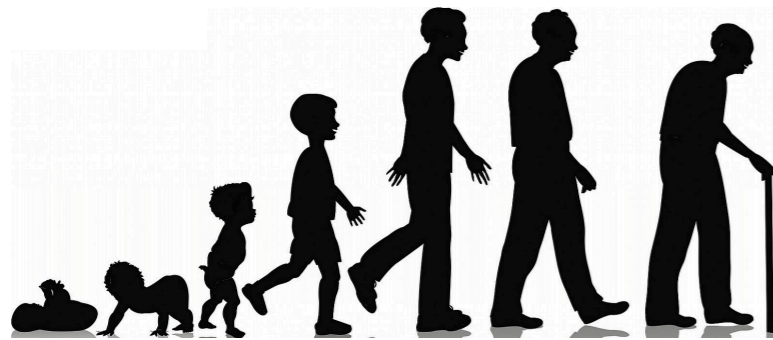
**social integration**



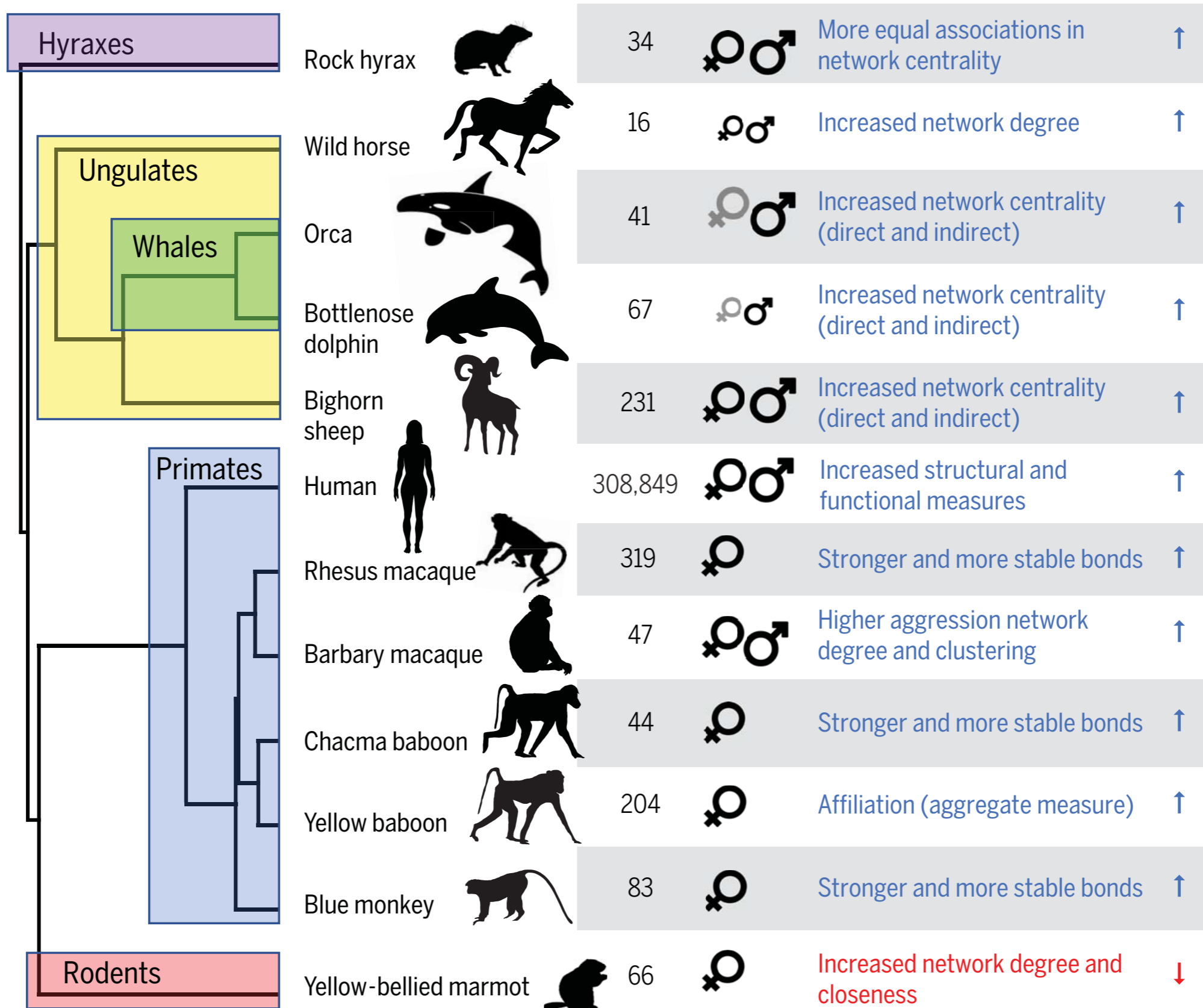
**early life adversity**















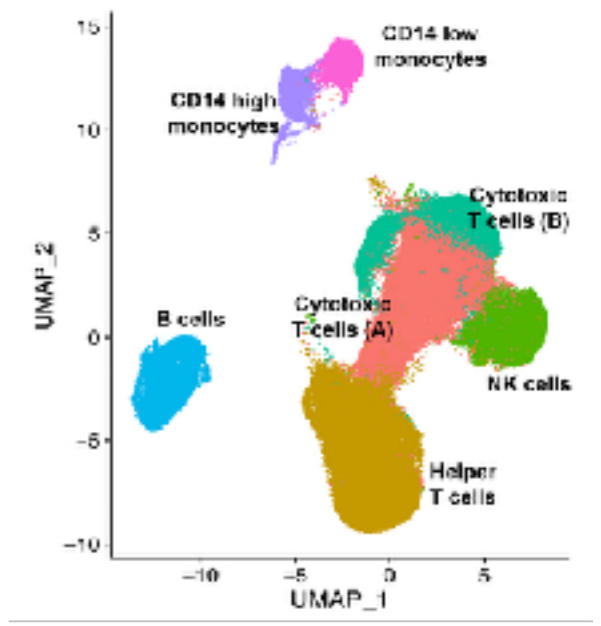
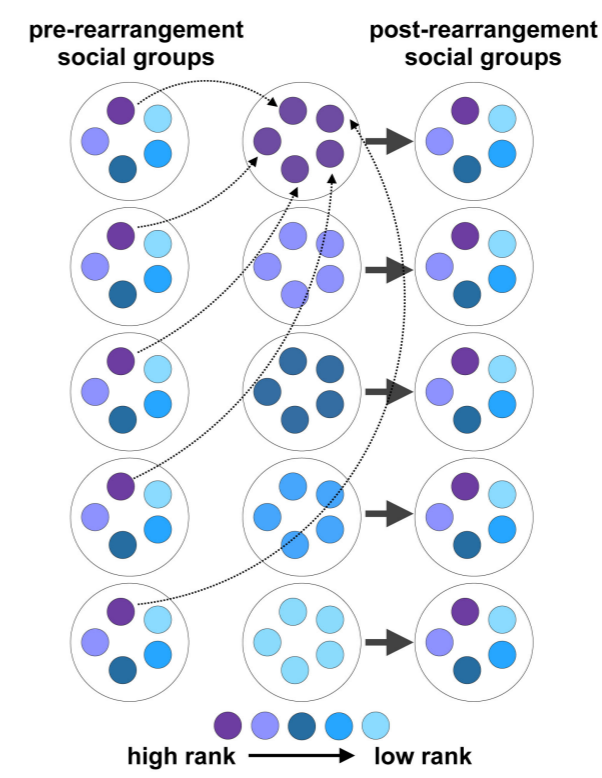
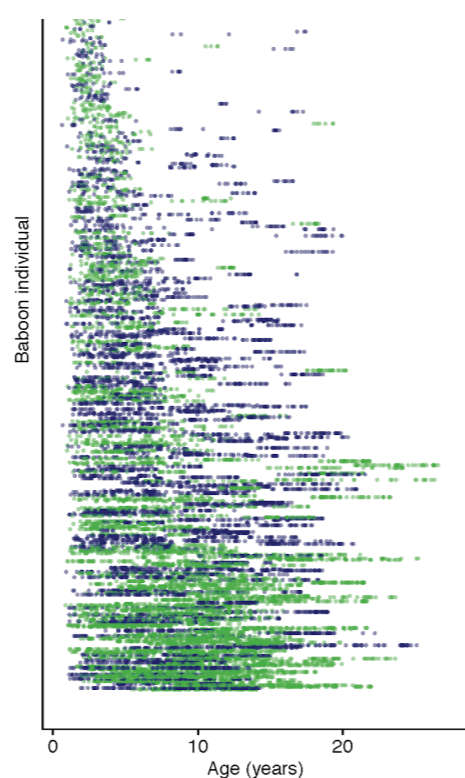
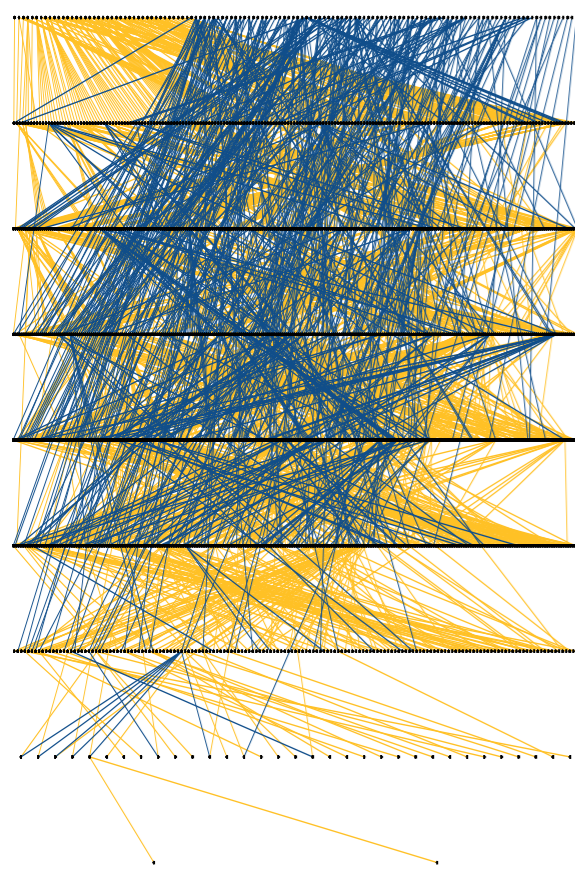
Beth Archie



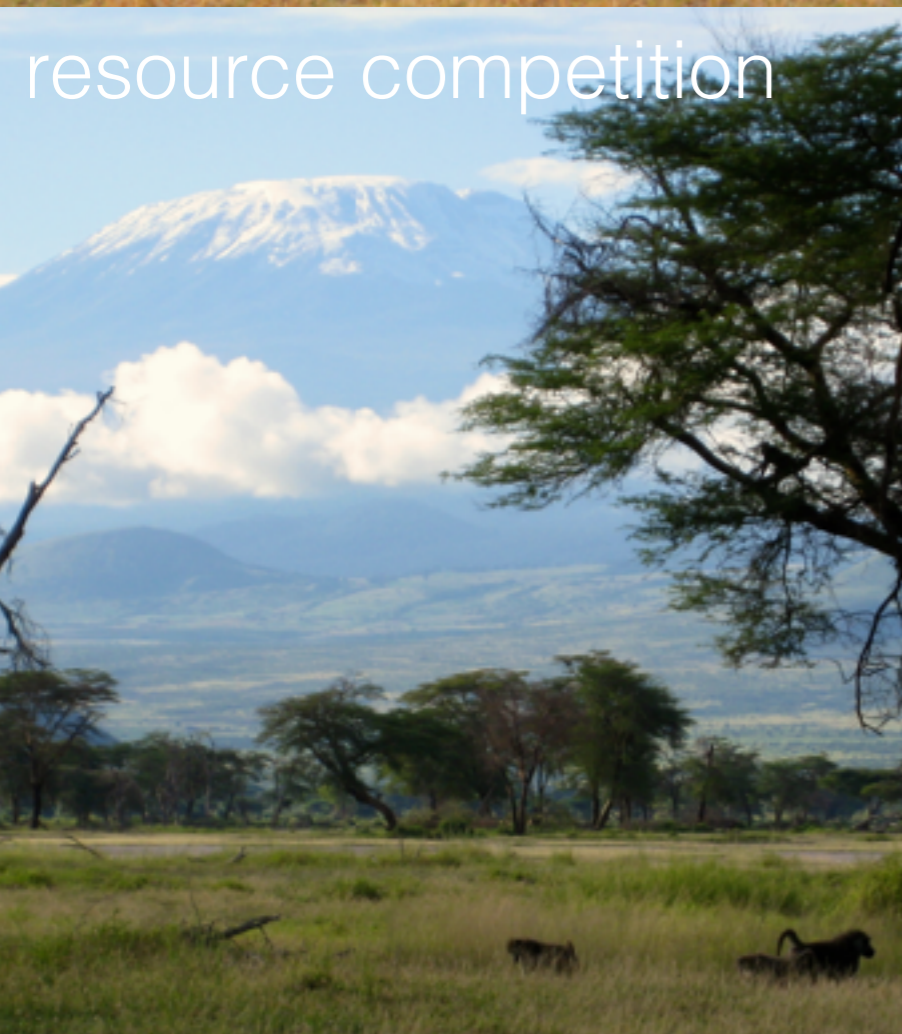
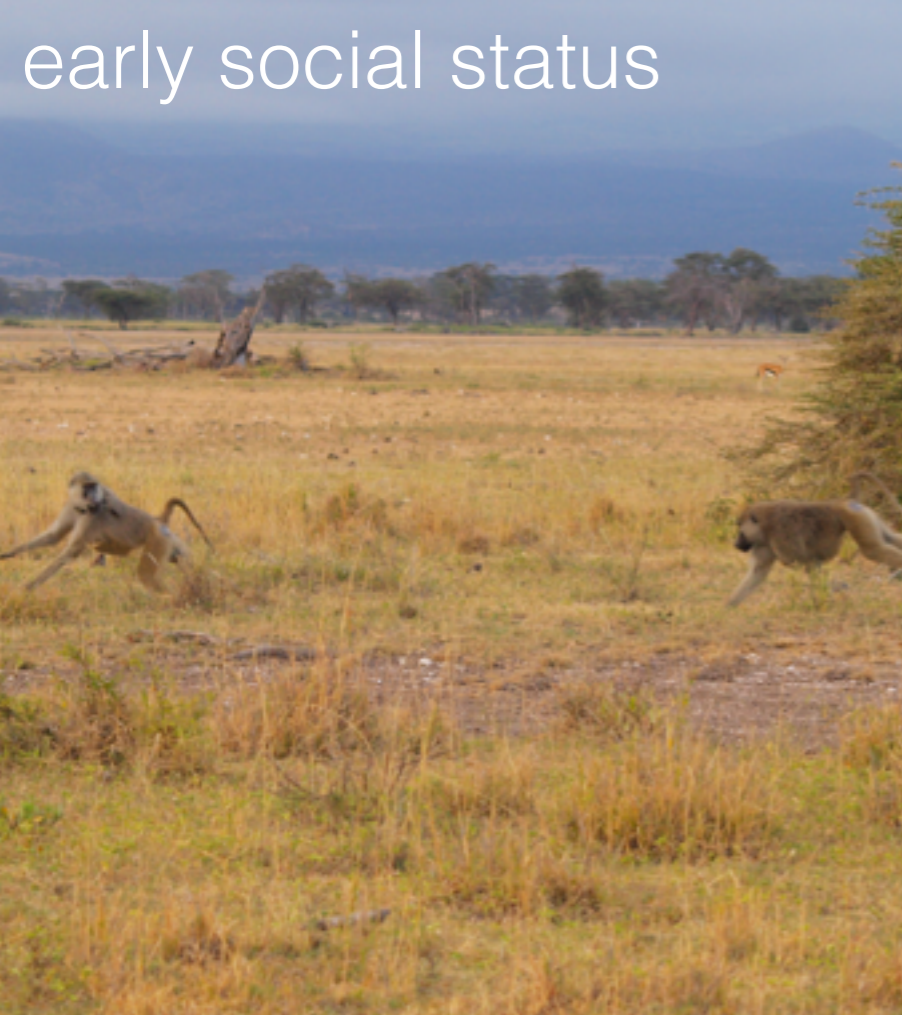
Alyssa Arre



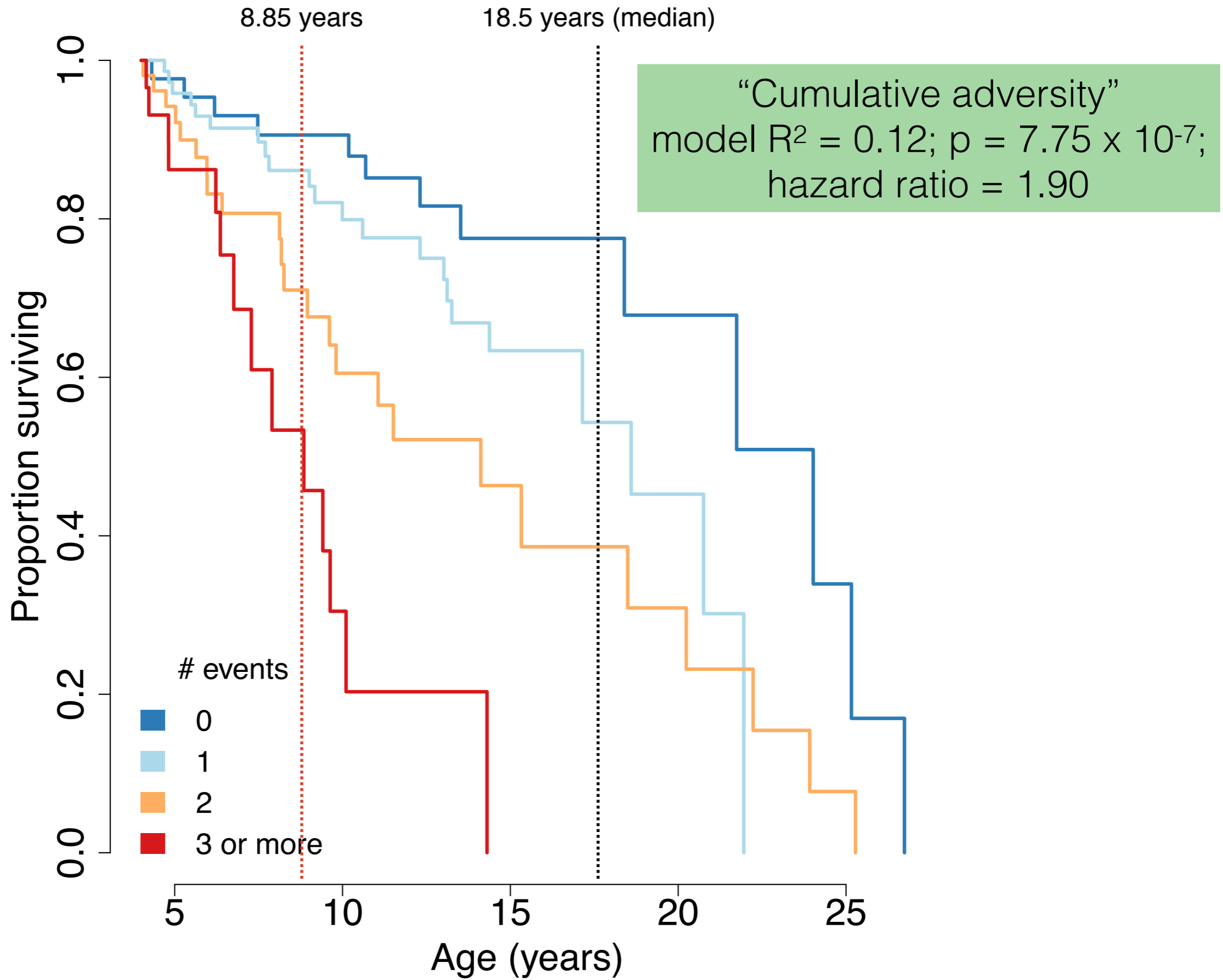
Jeanne Altmann











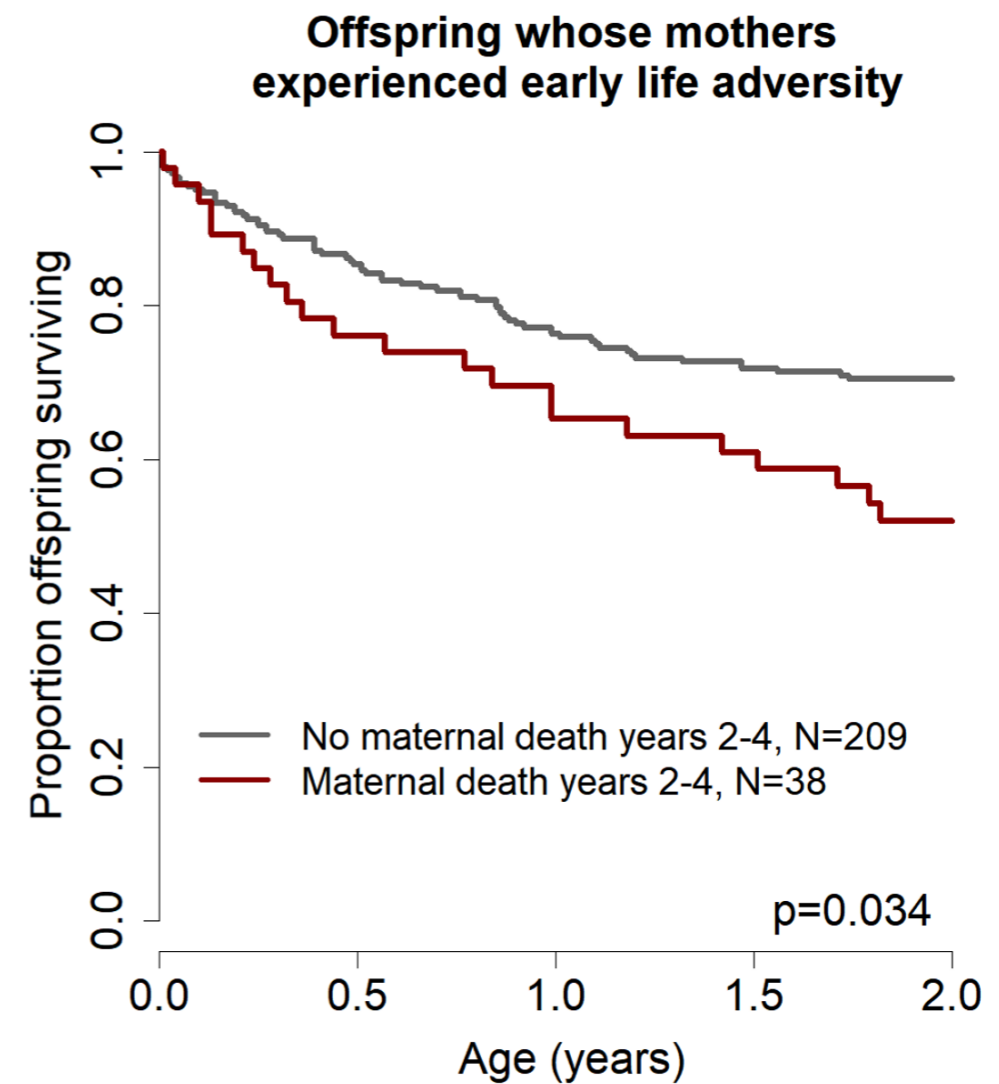
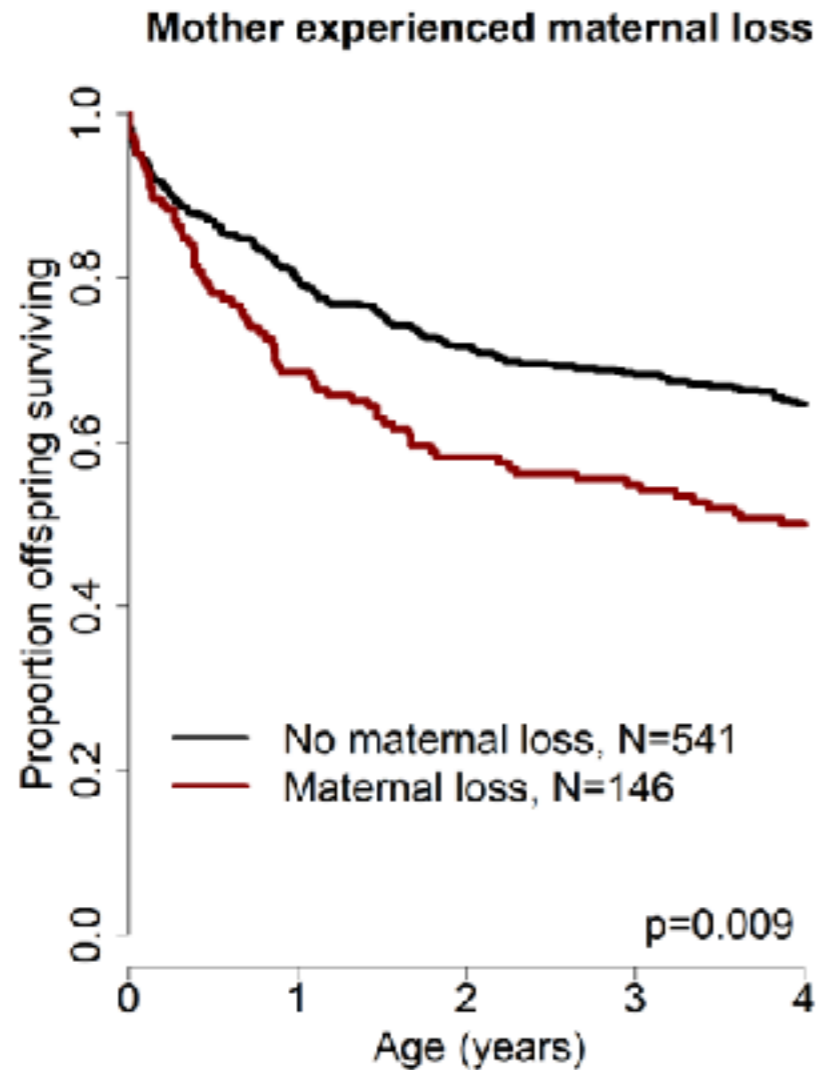




Matthew Zippel



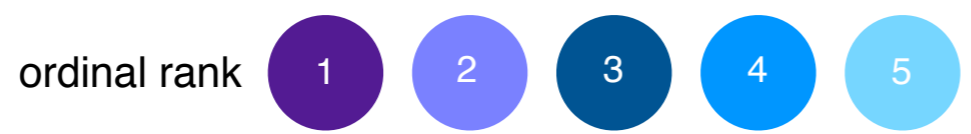
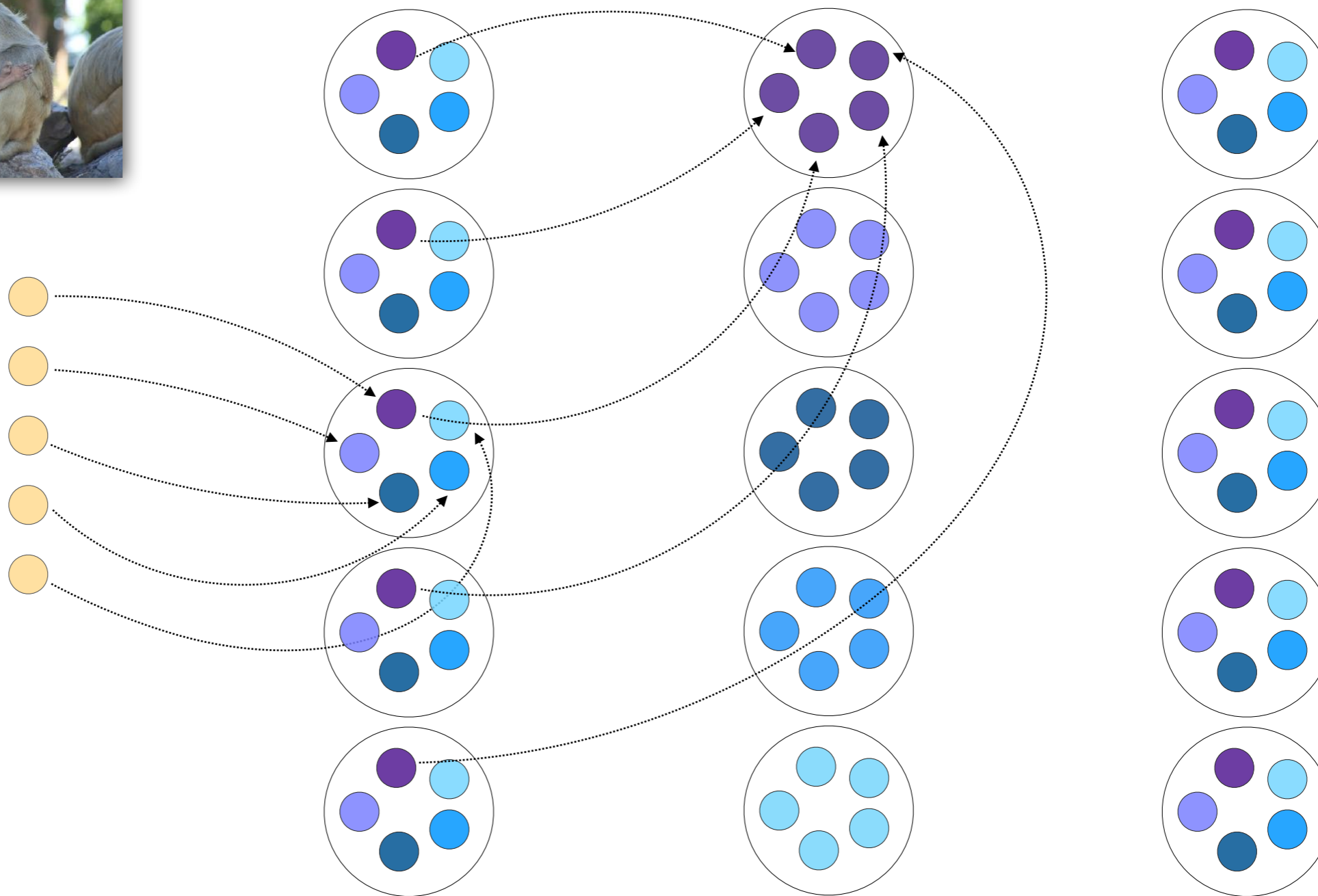
These effects are independent of the offspring's *own* environment, and likely explained by reduced maternal viability



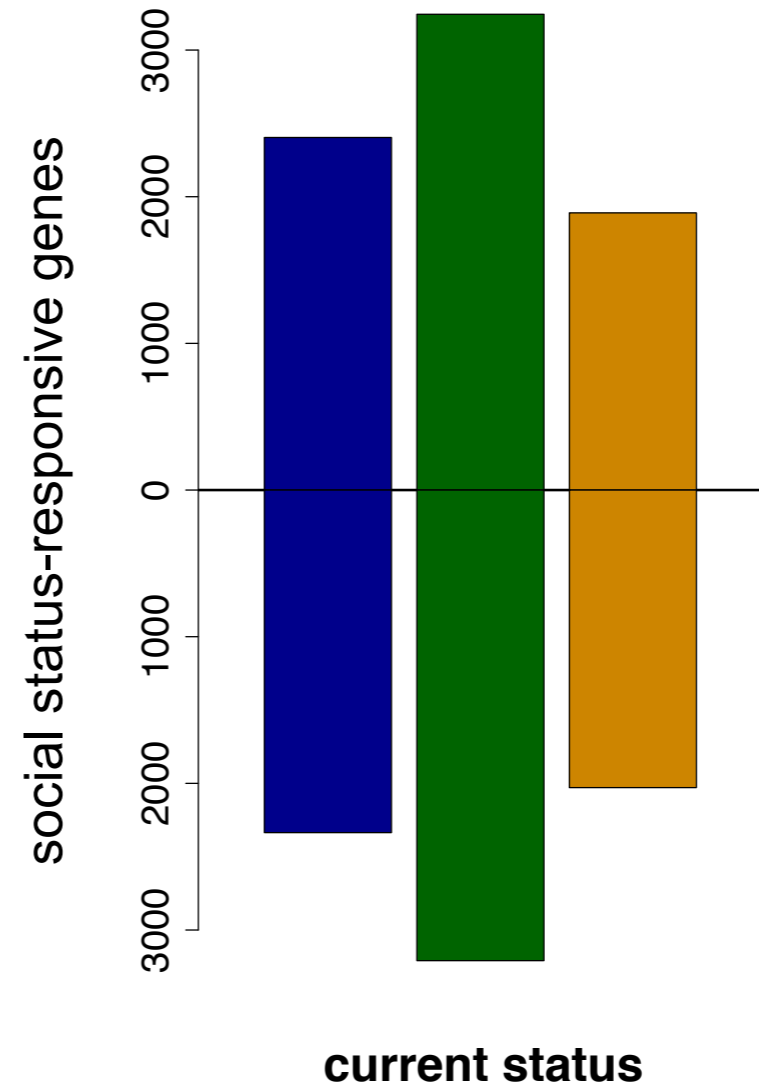
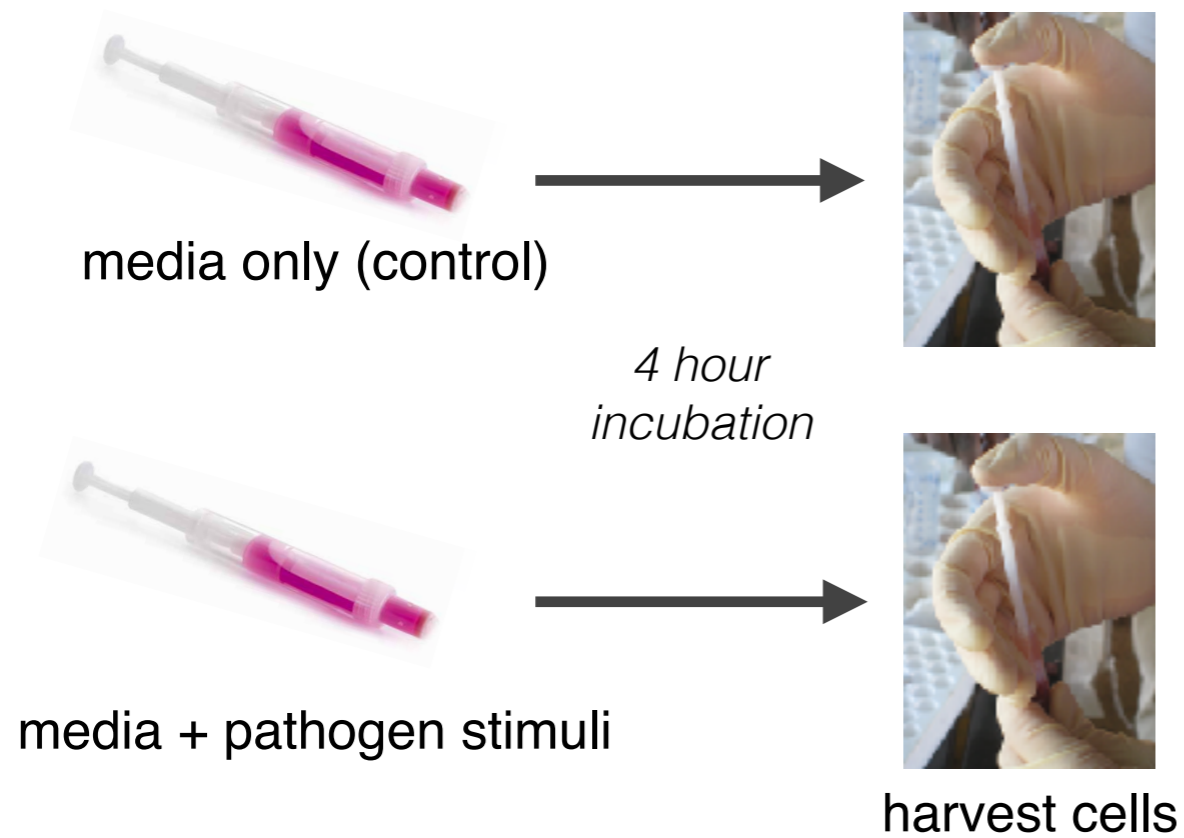
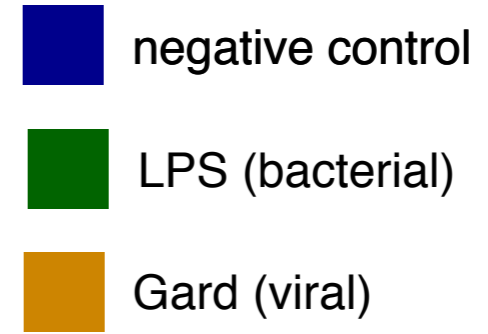
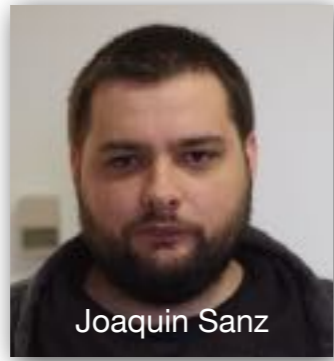
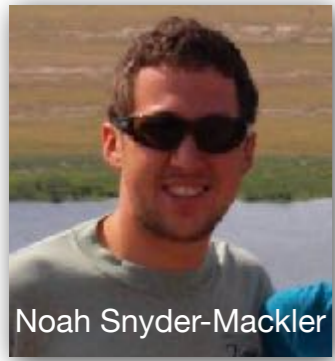


earlier  
introduction

later  
introduction







1,079 cases of past x current rank interaction  
 88% biased toward greater “memory” with low past rank



Social status is **causally implicated in altered immune function**, including the immune *response* to bacteria and viruses

Even when social status changes, a genomic signature of **social history** remains





# Thanks!

## BABOONS:

Susan Alberts (Duke)  
Jeanne Altmann (Princeton)  
Beth Archie (Notre Dame)

Matthew Zippel

Raphael Mututua  
Serah Sayialel  
Kinyua Warutere  
Isaiah Longida  
Tim Wango  
Vivian Oudu  
Mercy Akinyi  
Ruth Nyakundi  
Tom Kariuki  
Institute of Primate Research  
Kenya Wildlife Service  
National Museums of Kenya  
University of Nairobi

## MACAQUES:

Luis Barreiro (U Chicago)  
Mark Wilson (Emory)  
Vasiliki Michopoulos (Emory)  
Joaquin Sanz Remon (now Zaragosa)

Paul Maurizio  
Joao Batista  
Anne Dumaine  
Jordan Kohn  
Zach Johnson  
J.C. Grenier  
Yerkes NPRC staff

## The Social/Biological Determinants of Health Working Group



## TUNG LAB:

Noah Snyder-  
Mackler (now ASU)  
Amanda Lea (now  
Princeton)  
Tauras Vilgalys  
(now Chicago)  
Arielle Fogel  
Rachel Johnston  
Noah Simons  
Dana Lin  
Jordan Anderson

Ryan Campbell  
Shuyu He  
Shauna Morrow  
Amanda Shaver  
Mike Yuan  
Tawni Voyles  
BJ Nielsen  
Tina Del Carpio  
Matt Kim  
Kelly Williams  
Reena Debray

